

NEW OBSERVATIONS

Art and Culture



20

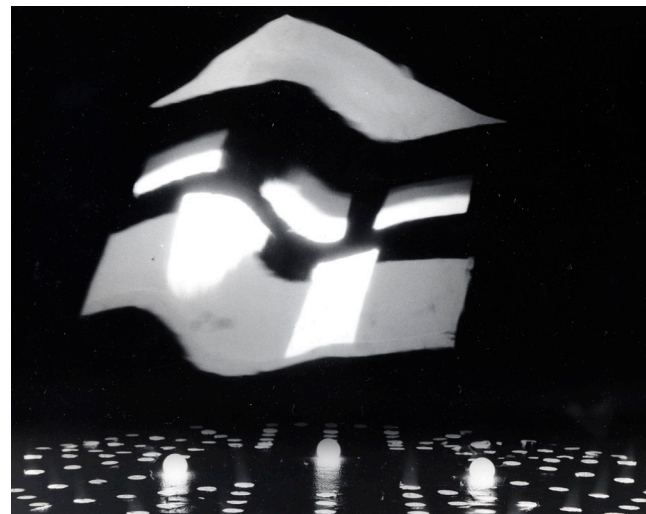
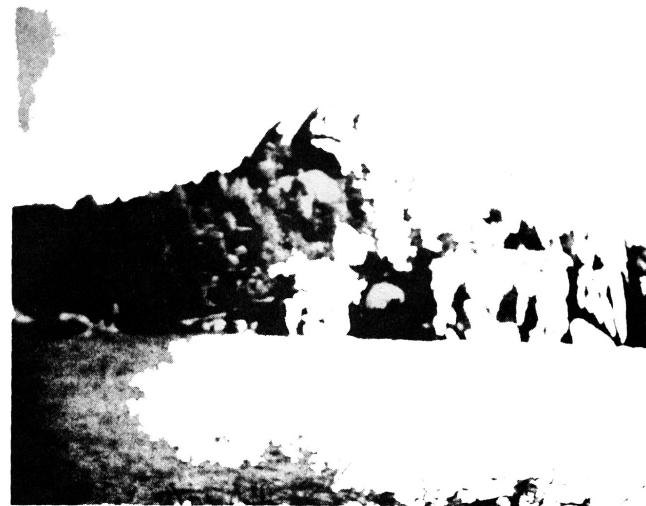
COLLABORATION

CONSTRUCTS FOR THE NEW SCRUTINY

THE SPOT SYNDROME.

In the grandiose landscape the figure is reduced to an inconsequential spot. The struggle to come to terms with this magnitude outside itself requires an effort of will analogous to the extreme physical exertion of climbing a mountain. It is as hard to conquer the mountain mentally as it is to conquer it physically. Any excess on the part of the mind can cancel the representational efficacy of it. A freightful obscurity is produced of something so immense in size that it starts to fade at the boundaries. The mind can then turn only to itself for its new object, but the object can be too insignificant to signify. It can disappear completely, can become pure consciousness—an unpopulated landscape painting. The tiny figure in the landscape. Where is this lost figure? Any buried treasure is a wealth founded on absence. The right hole must be examined to exume the nugget of satisfaction. Stare deep into this empty cave shrunk to just a point on the horizon — the navel. This focus frames the grandiosity. Grandiosity has come full-circle to where exterior decor has become interior decor—a cheap landscape painting, the furniture sublime extended to infinity, a beautiful frame. Loss in a chaos that is richly textured is not so bad; there is always a false sense of placement, of being omphalos. A smartly placed object can become the center of attention.

(Mike Kelley)



The subdivision has a clear identity with a Model Home sitting at the head. Roads to the subdivision enter and exit past the Model Home. He is on the look-out for expanding his original form. Subdivide, subdivide, spread yourself far and wide. The outer frontier is no barrier to the community. Nothing is thought of as being incapable of expansion. You break down into a unit and you do it again. Roads extend out into the distance and stop at empty lots. Lots are marked by flags where houses could stand. Pick a dot, put a house on a lot. Points are out there to be grabbed. If points touch they make lines and the subdivision wants the lines going into its plan. It maintains an economic and visual order, a sense of continuity, over the frontier.

(Ericka Beckman)